

# CERTIFICATE OF LOCATION OF GOVERNMENT CORNER

SOUTHWEST Corner of Section 14, Township 106, Range 43, 5th P.M.

STATE OF MINNESOTA, County of MURRAY

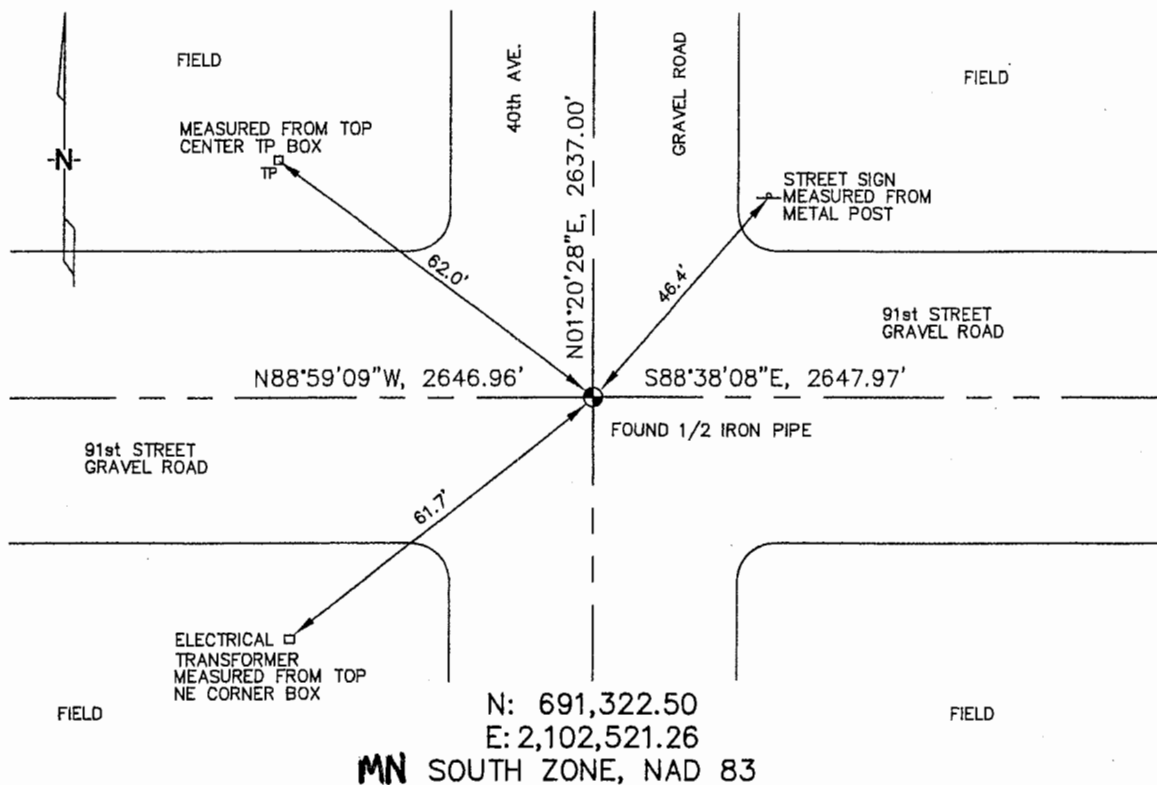
At the corner location shown on the sketch :

On 3/22/2006 found 1/2" IRON PIPE IN GRAVEL ROAD.

left monument as found,  lowered monument,  removed monument (explain)

On \_\_\_\_\_ set \_\_\_\_\_

Sketch of reference ties



Statement of evidence relative to this corner location is on back page

I hereby certify that this document and the data contained herein was prepared by me or under my direct supervision.

Thomas J. Zeff Signature 4/24/06 Date  
Registration No. 44563

- Land Surveyor,  Professional Engineer
- County Surveyor,  County Engineer

## OFFICE OF THE COUNTY RECORDER

County of \_\_\_\_\_

**SEP 28 2006**

I hereby certify that this document was filed in the Co. Recorders office at \_\_\_\_\_ M. on the \_\_\_\_\_ day of \_\_\_\_\_ A.D., 20

County Recorder James V. Johnson  
By \_\_\_\_\_, Deputy

DOCUMENT NO. \_\_\_\_\_

STATEMENT OF EVIDENCE:

SOUTH WEST CORNER, SECTION 14, T. 106 N., R. 43 W.,  
MURRAY COUNTY, MINNESOTA

1866

J.W. BISHOP, US. DEPUTY SURVEYOR, MONUMENTED CORNER.

3/22/2006

ULTEIS ENGINEERS, INC. SURVEY CREW, BRIAN PAYNE  
PARTY CHIEF FOUND 1/2" IRON PIPE @ INTERSECTION  
OF GRAVEL ROADS.

TIES: NW - 62.0' TO TOP CENTER, TELEPHONE PEDESTAL;  
NE - 46.4' TO METAL POST OF STREET SIGN.  
SW - 61.7' TO TOP NE CORNER, ELECTRICAL  
TRANSFORMER BOX.

N - 2637.00' TO W 1/4 CORNER, SEC 14.

E - 2647.97' TO S 1/4 CORNER, SEC 14.

W - 2646.96' TO S 1/4 CORNER, SEC 15.